



Fishers Lane, London, W4 1YB

£425,000

WHITMAN & CO.

SALES · LETTINGS · COMMERCIAL

- Retirement Flat
- 15' Reception Room
- House manager
- Rare two bedrooms property
- Balcony with lovely views
- Communal living room and gardens

Tenure - Leasehold
 Length of lease - 104 Years
 Ground Rent - £568 pa
 Maintenance Charge - £3500 pa
 Local Authority - Hounslow
 Council Tax - Band D

THE PROPERTY

- RETIREMENT FLAT - A well presented rare two bedroom, second floor flat with a balcony and views over the common located in this private retirement block just north of Chiswick High Road. Two bedrooms, 15' reception room, fitted kitchen, shower room, balcony, 104 years lease, house manager, communal living room and gardens, laundry room, assistance alarm, off-street parking, close proximity to all amenities. No chain.

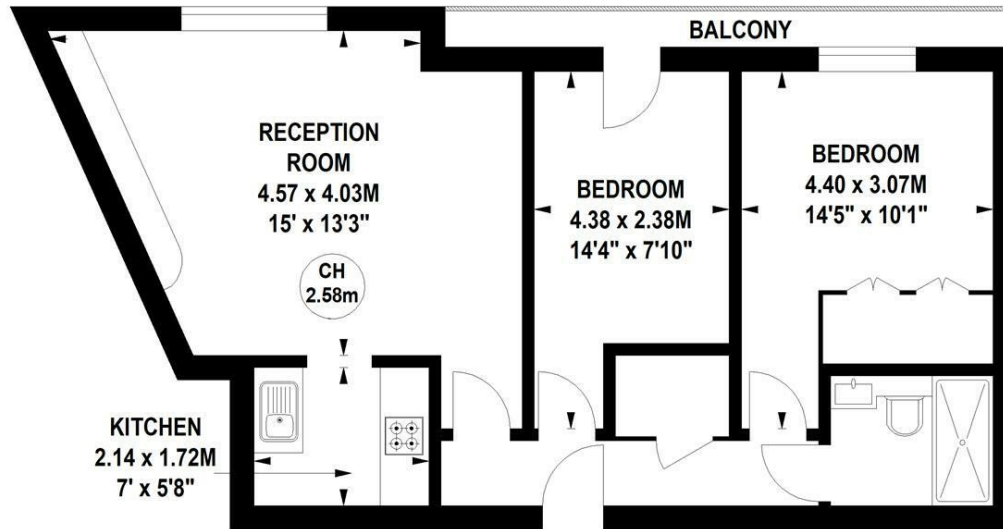
Homecross House, W4

Approximate gross internal area

56.30 sq m / 606 sq ft



Key :
 CH - Ceiling Height



Second Floor

Not to scale, for guidance only and must not be relied upon as a statement of fact.
 All measurements and areas are approximate only

SITUATION



5-7 Turnham Green Terrace, Chiswick, London, W4 1RG

Tel 020 8747 8800

E-mail sales@whitmanandco.com

Website www.whitmanandco.com

